

## Mounting Blocks

Stainless Steel

### SPECIFICATION

#### Type

- Type **B**: Mounting on both sides

Stainless steel precision casting AISI CF-8 **NI**

Matte shot-blasted finish **GS**

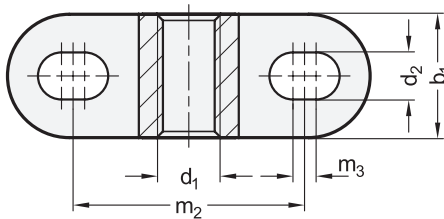
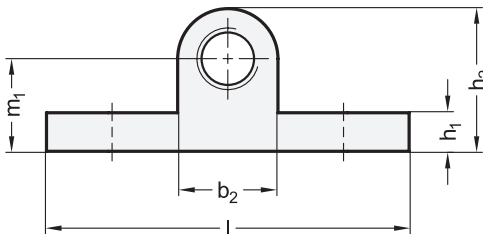
### INFORMATION

Mounting blocks GN 3492 quickly and easily fasten standard parts with external thread, such as spring plungers or setting bolts, perpendicular to the mounting plane. The slotted holes and the locating thread allow for positioning of the mounting blocks in two directions.

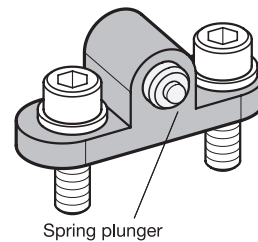
To prevent unintentional adjustment, the standard part can be secured with a clamping thread lock, a lock nut or a grub screw.

### TECHNICAL INFORMATION

- Stainless Steel Characteristics (see page A26)



#### Application example



### GN 3492

STAINLESS STEEL

Description	b1	d1	b2	d2 For screw	h1	h2	Length l	m1	m2	m3	⚖
GN 3492-8-M4-B-NI-GS	8	M 4	7	M 3	2.5	9.5	25	6	16	1.5	5
GN 3492-10-M5-B-NI-GS	10	M 5	8	M 4	3.5	12	32	8	20	2	9
GN 3492-12-M6-B-NI-GS	12	M 6	10	M 5	4	15	38	10	24	2.5	15
GN 3492-16-M8-B-NI-GS	16	M 8	13	M 6	5	18.5	47	12	30	3	34
GN 3492-20-M10-B-NI-GS	20	M 10	16	M 8	6	23	60	15	38	4	58